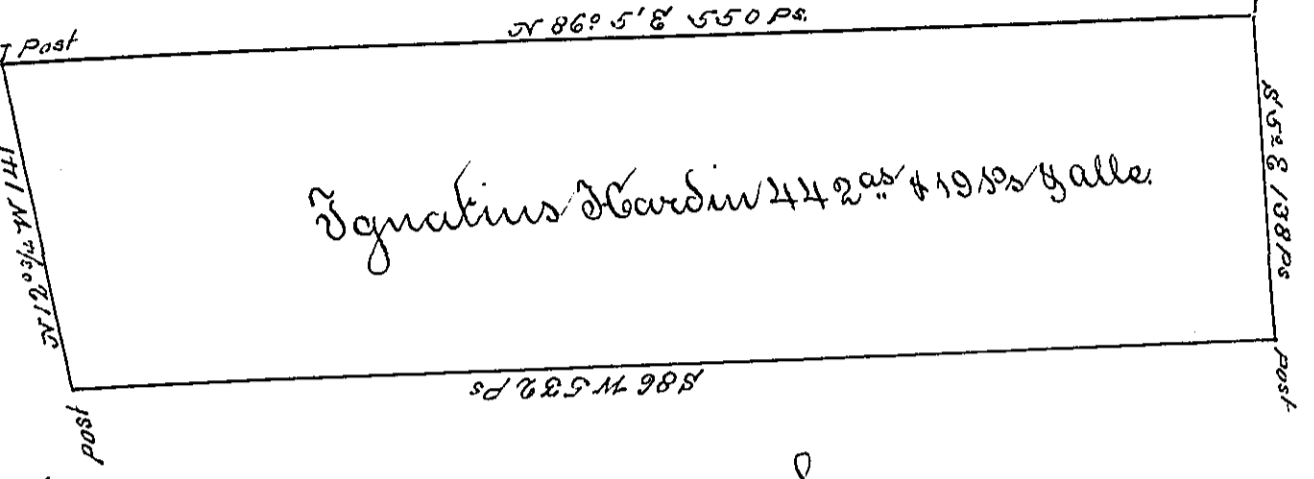


C 76-260
John H. Cardin



Woodcocke - Newbery

James Wilson

C127-117
D20-38
D'Arbours cons

Situated in Copewell and Woodberry Townships, Bedford County containing 442 acres & 19 perches and the usual allowance of six per cent for Roads & Highways be Surveyed the 12th day of October 1794. on Warrant Dated September 19th 1794.

To Daniel Brodhead Esq. S. G.

George Woods Junr. S.

IN TESTIMONY that the above is a copy of the original remaining on file in the Department of Internal Affairs of Pennsylvania, made conformably to an Act of Assembly approved the 16th day of February, 1833, I have hereunto set my Hand and caused the Seal of said Department to be affixed at Harrisburg, this third day of November 1896.

James W. Latta
Secretary of Internal Affairs.